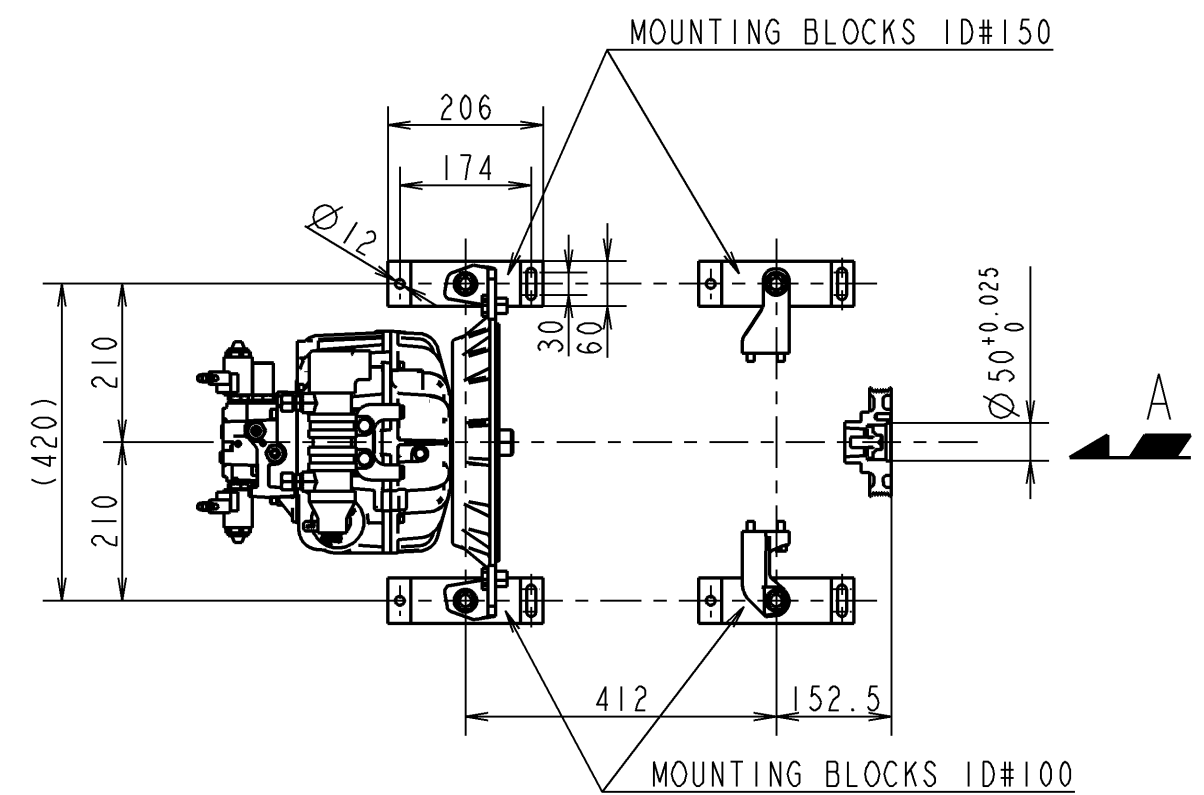
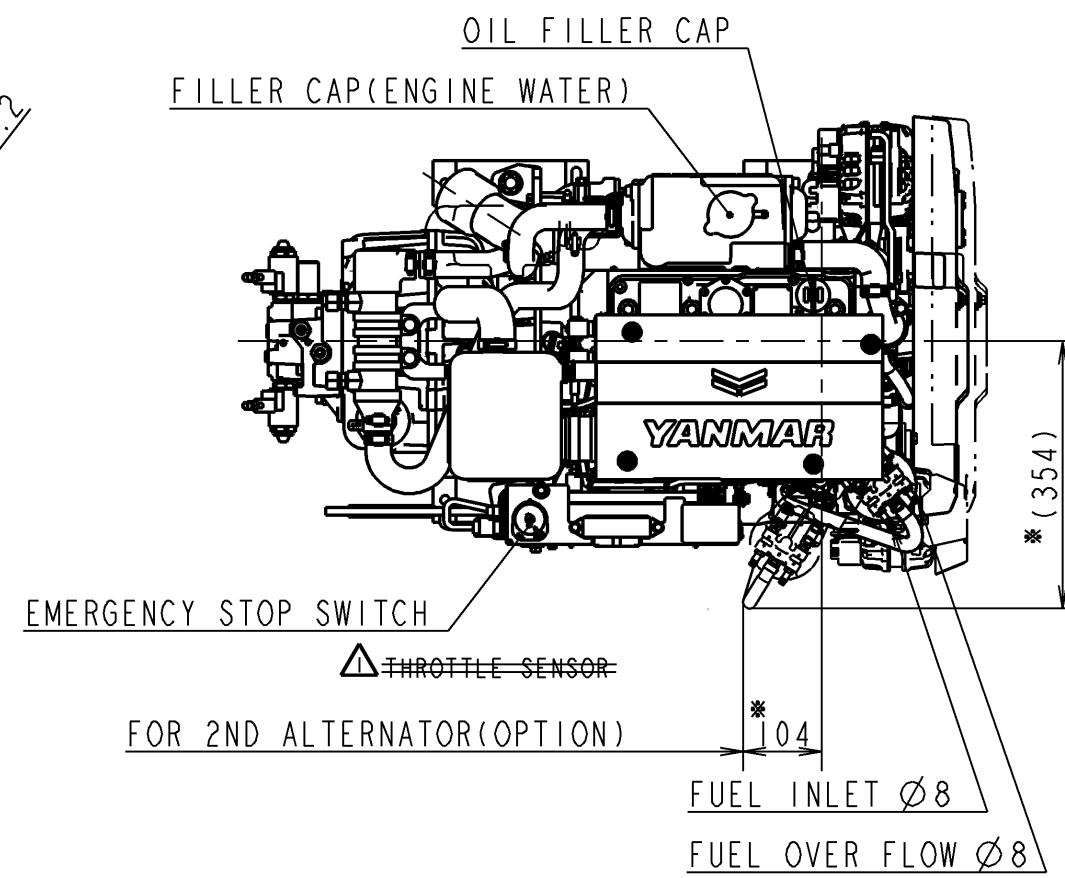


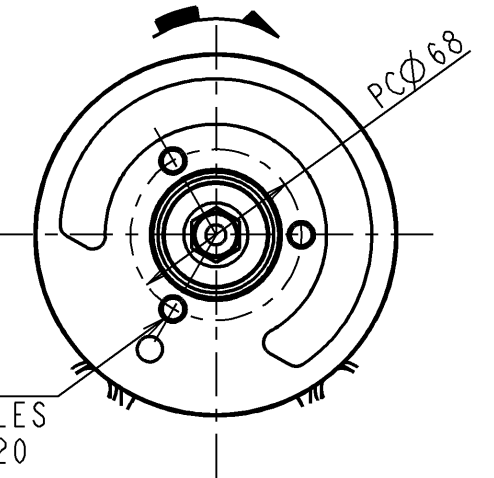
ARROW C



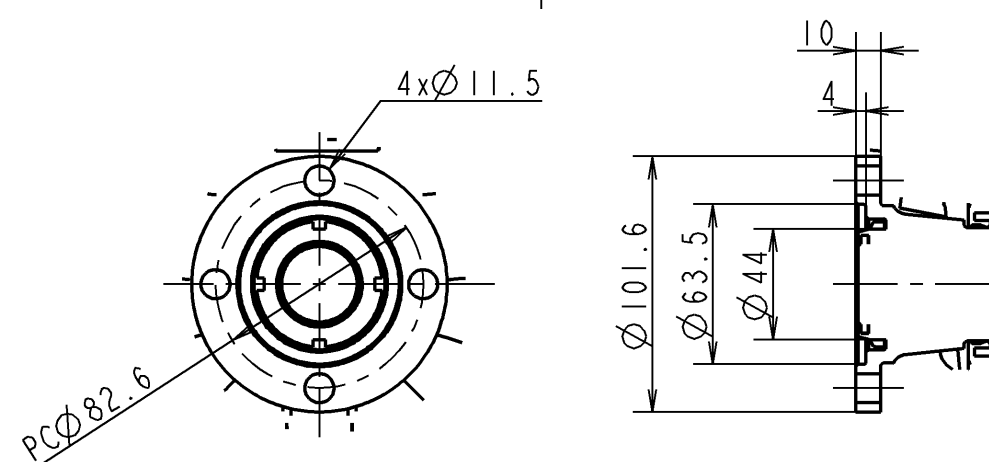
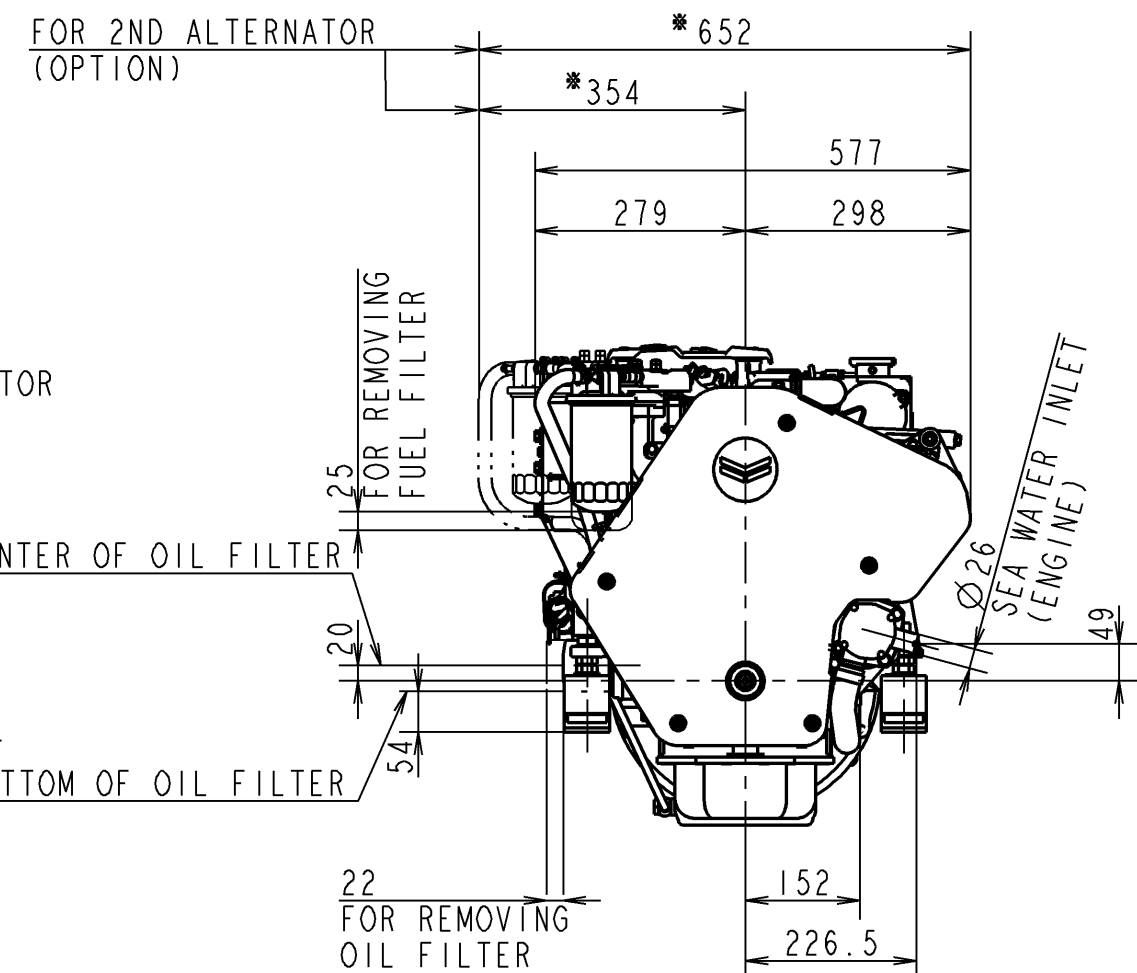
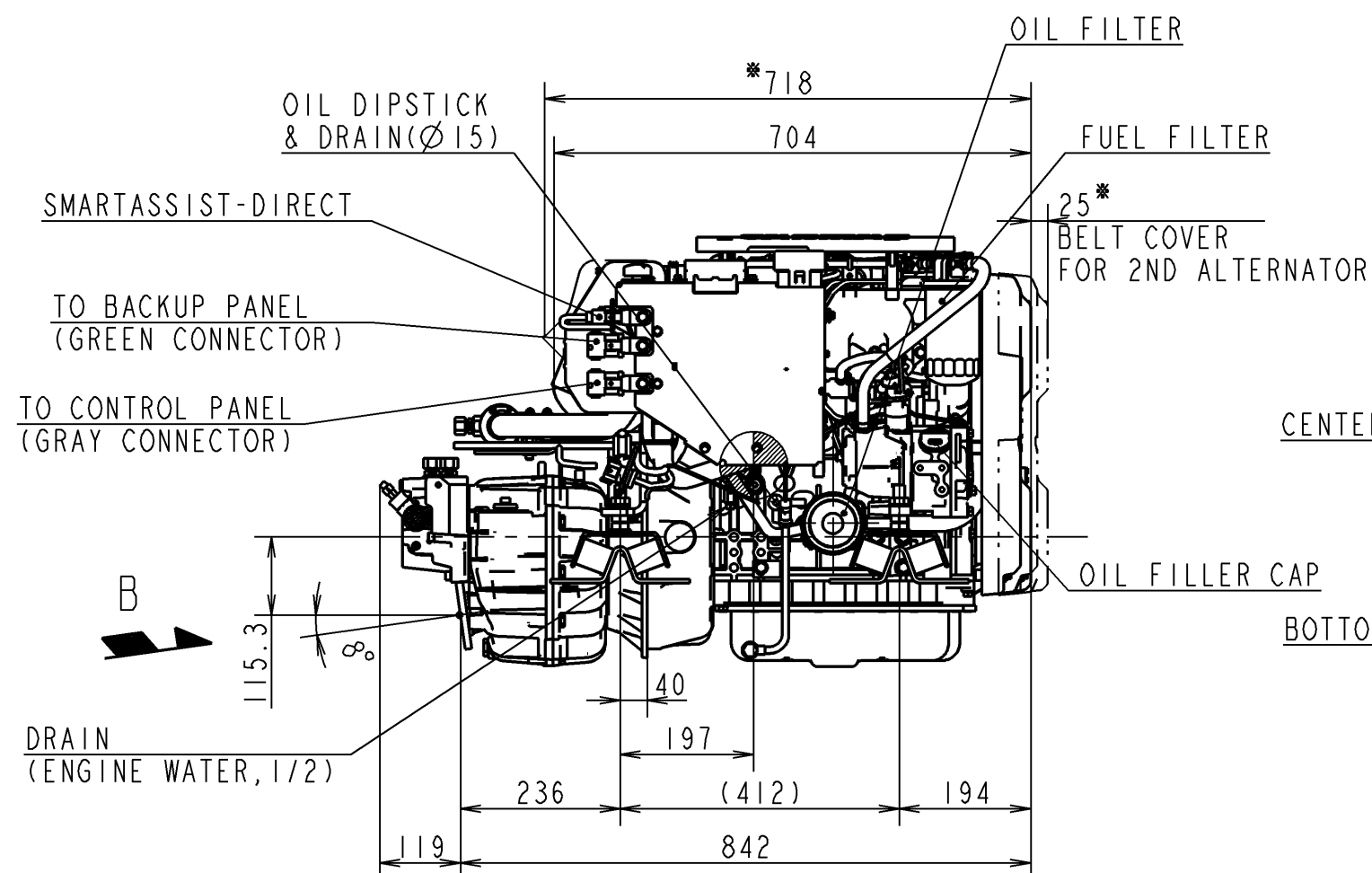
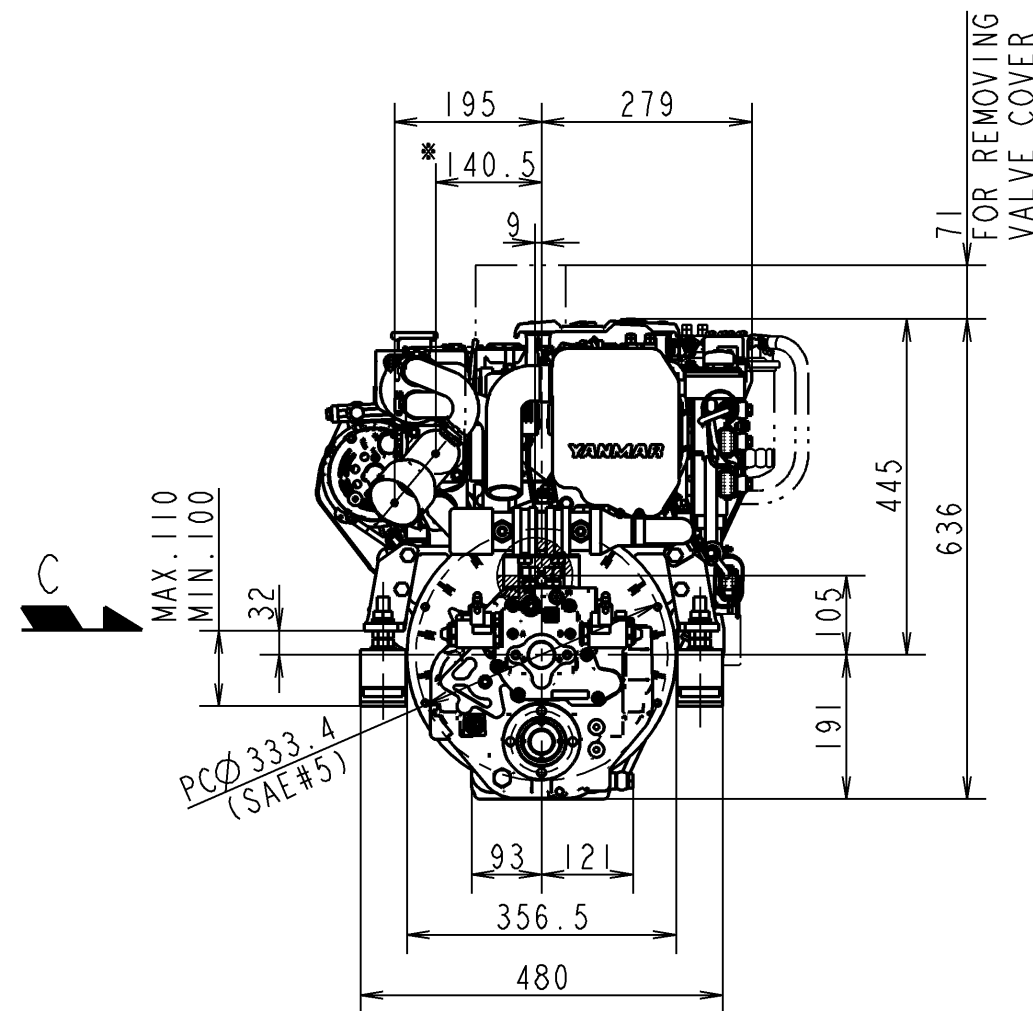
CAREER

(YDSBD-18022)  
REV.1(2019.2.12)  
DELETE THROTTLE SENSOR  
(YDSBD-18025)(SHIGA)

DIRECTION OF ROTATION  
(ENGINE)



DETAIL OF PULLEY  
SCALE 1:3  
ARROW A



DETAIL OF COUPLING  
SCALE 1:3  
ARROW B

3D-CAD
NOTICE
GEOMETRICAL TOLERANCE
KIND OF TOLERANCE
SYMBOL
STRAIGHTNESS TOLERANCE
CIRCULARITY TOLERANCE
PARALLELISM TOLERANCE
PERPENDICULARITY TOLERANCE
ANGULARITY TOLERANCE
POSITIONAL TOLERANCE
SYMMETRY TOLERANCE
CHAMFER TOLERANCE
ROUNDNESS TOLERANCE
TOTAL RUN-OUT TOLERANCE

- NOTE
- 1.MOUNTING BLOCKS ARE COMPRESSED ABOUT 4mm BY ENGINE WEIGHT.  
DIMENSIONS OF MOUNTING BLOCK IN THIS DRAWING ARE WITHOUT ANY DEFORMATION.
  - 2.MOUNTING BLOCKS ARE EQUIPPED FOR STANDARD ACCESSORY.
  - 3.THE FIGURES MARKED WITH \* SHOW THE DIMENSIONS WITH U-MIXING ELBOW OR OPTIONAL PARTS.
  - 4.● SHOWS THE CENTER OF GRAVITY.

SPECIFICATIONS				
Model		3JH40		
Continuous Power(ISO 8665)		kW/min <sup>-1</sup> 26.8 / 2907		
Fuel Stop Power	Propeller shaft(ISO 8665)	kW/min <sup>-1</sup> ---		
	Crankshaft(ISO 8665)	kW/min <sup>-1</sup> 29.4 / 3000		
Reduction ratio		1.93	2.29	2.48 2.71
Dry mass kg		Approx.225		
Direction of Crankshaft rotation		Counter-clockwise		

量産用  
FOR MASS PRODUCTION

SEC. MANAGER 吉崎		MODEL		3JH 40		SCALE		1:10	
CHECKED 北本		SPECIALIST		QTY		-		MATERIAL	
DESIGNED K.SHIGA		DRAWN		DATE:Y.M.D 2018.11.9		NAME		3JH40xZF25A-E-シフト	
YANMAR						CODE		REV.1	
YANMAR CO.,LTD. DEVELOPMENT DIV.						B2-29272-0070		DRAW SIZE A2	